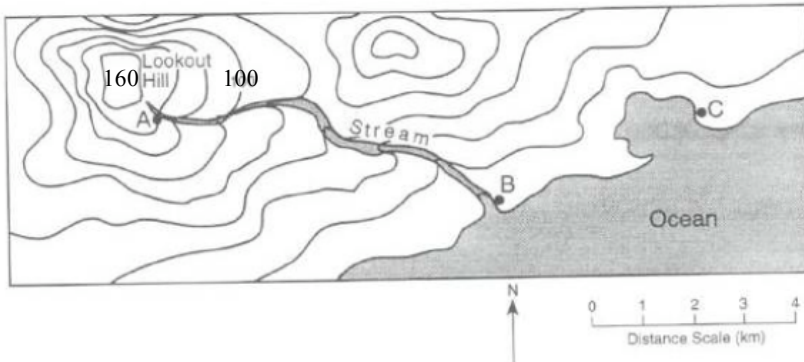


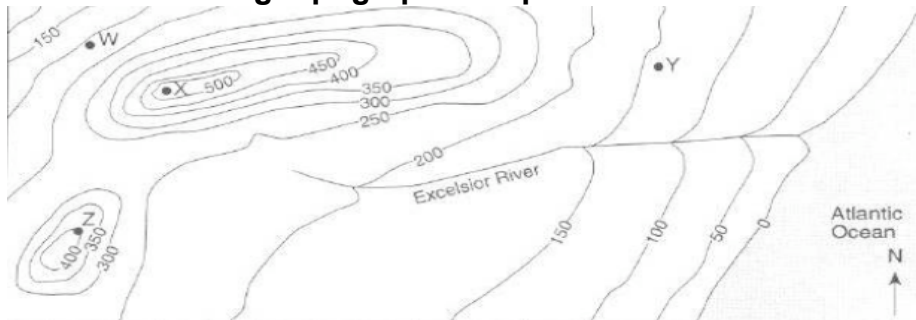
# Topographic Map Worksheet

Use the following topographic map to answer 1 -3.



- \_\_\_\_\_ 1. The elevation at Point A is  
A 60 m      C 140 m  
B 100 m     D 300 m
- \_\_\_\_\_ 2. In which direction is the stream flowing?  
A northwest   C southwest  
B northeast   D southeast
- \_\_\_\_\_ 3. Which side of Lookout Hill has the steepest slope?  
A north      C east  
B south      D west

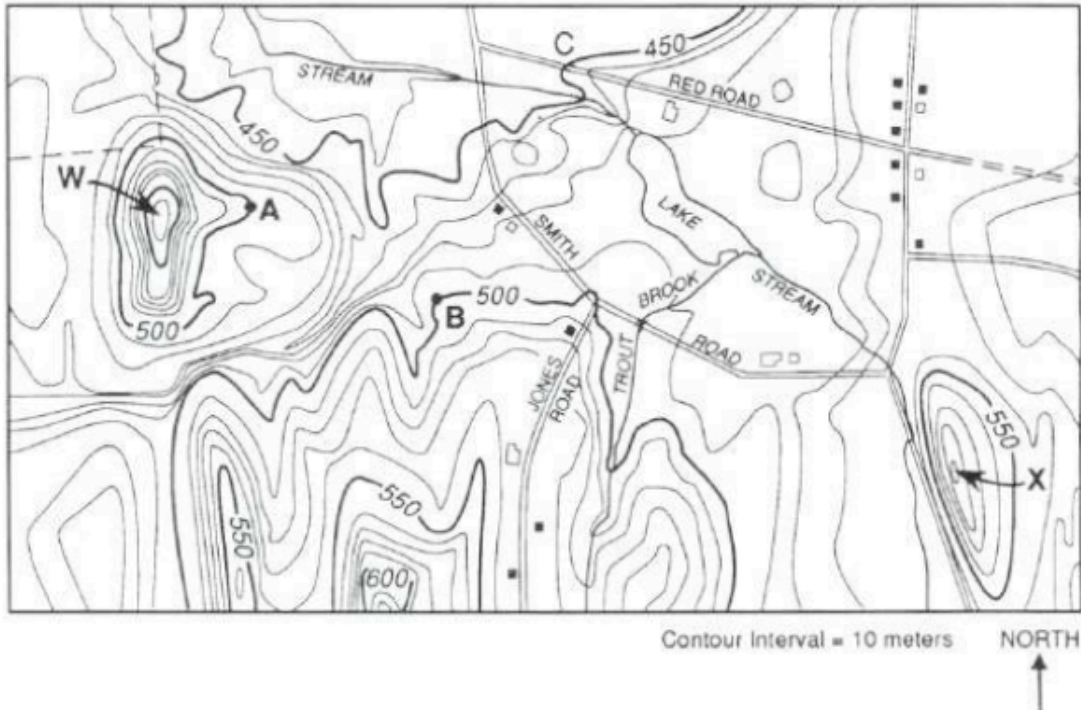
Use the following topographic map to answer 4 -7.



- \_\_\_\_\_ 4. What is the approximate elevation at location Y?  
A 140 m      C 200 m  
B 170 m      D 230 m
- \_\_\_\_\_ 5. What is a possible elevation at point X?  
A 450 m      C 500 m  
B 700 m      D 400 m
- \_\_\_\_\_ 6. If a person at point W travels uphill, in which direction is the person traveling?  
A northwest   C southwest  
B northeast   D southeast

- \_\_\_\_\_ 7 What is the elevation difference of the entire length of the Excelsior River?  
 A 0 m            C 225 m  
 B 200 m        D 250 m

**Use the following topographic map to answer 8-10.**



- \_\_\_\_\_ 8. What is the elevation at the intersection of Jones Road and Smith Road?  
 A 450 m        C 550 m  
 B 500 m        D 600 m
- \_\_\_\_\_ 9. On which side of hill X is the steepest slope found?  
 A north        C south  
 B east         D west
- \_\_\_\_\_ 10. What is the contour interval on this map  
 A 10 m        C 50 m  
 B 20 m        D 100 m