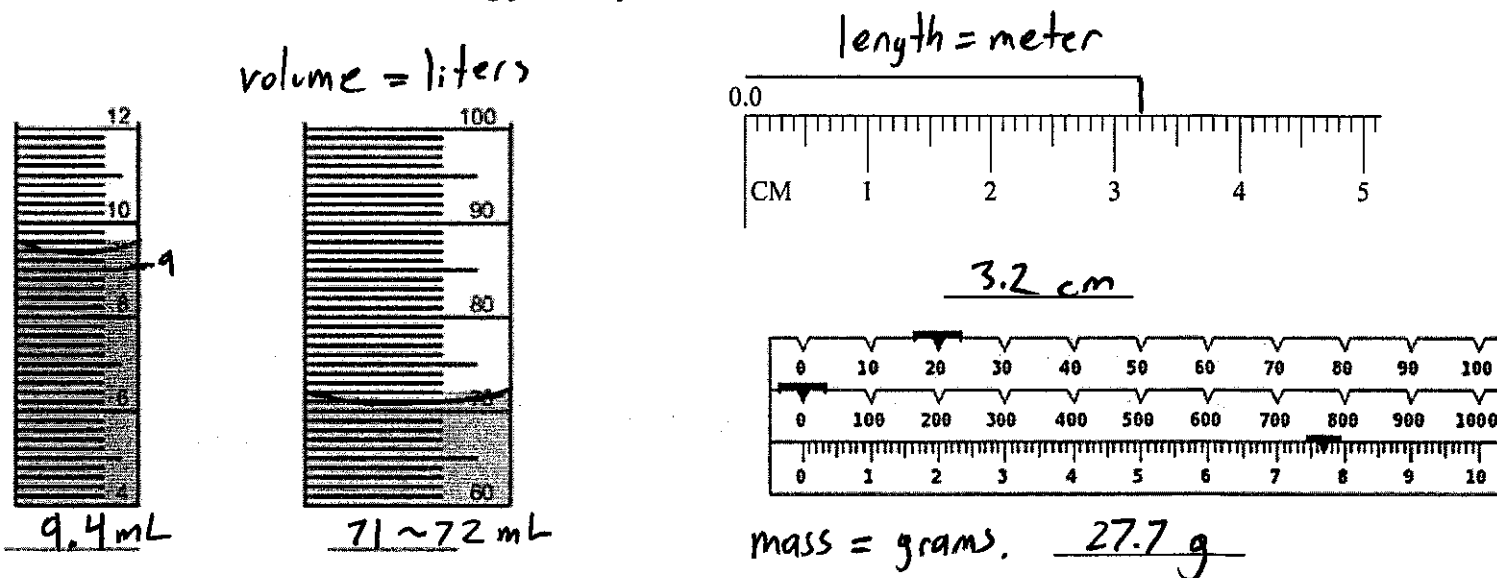
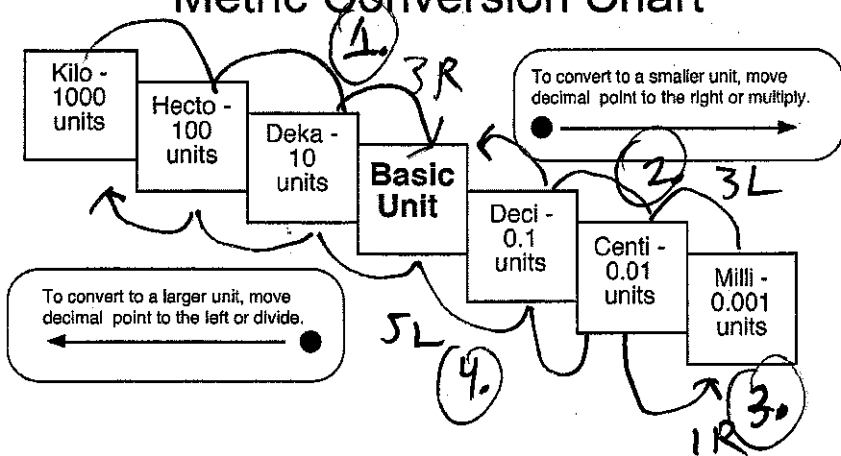


5. Make sure you know how to read the measurements from a graduated cylinder, triple beam balance, ruler, etc. Answer the following practice questions below.



6. Use the metric conversion chart to convert the following problems.

Metric Conversion Chart



(a) 8.76 kg 8760 g

(b) 34.5 mm 0.0345 m

(c) 0.01 cm 0.1 mm

(d) 1.0 cL 0.00001 KL

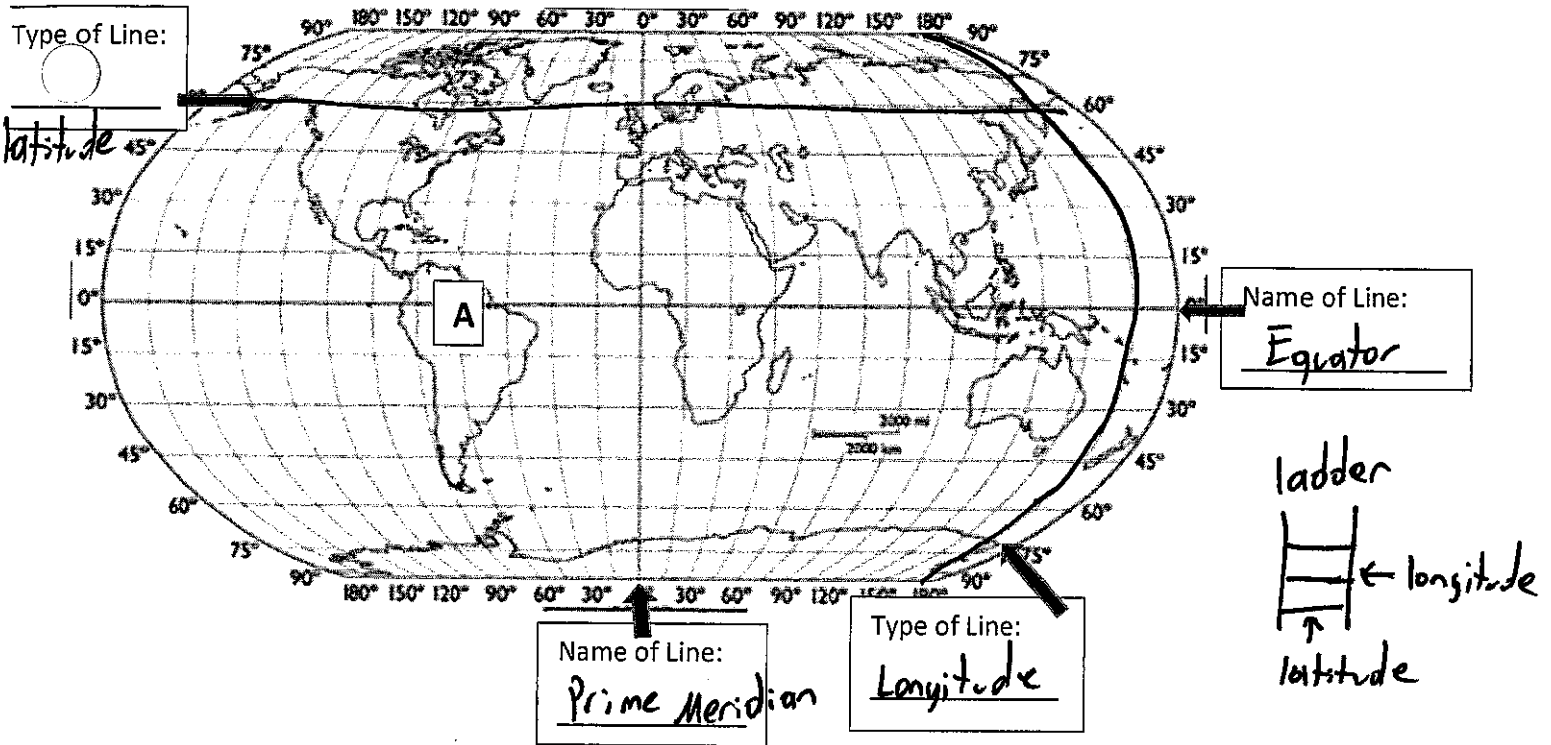
7. Fill in the chart below on laws, theories, and hypothesis. Answer the question below.

	Definition	Example
Theory	Is supported by multiple hypothesizes that have been tested → explains why	- Big Bang Theory - Theory of Evolution
Law	can be proven by observation + fact → explain how	- $F=ma$ - Law of Motion
Hypothesis	Educated guess can be tested	If I put an alka seltzer in coke then it will dissolve.

(b) What is the Big Bang Theory?

Theory of how the universe was created by a large explosion.

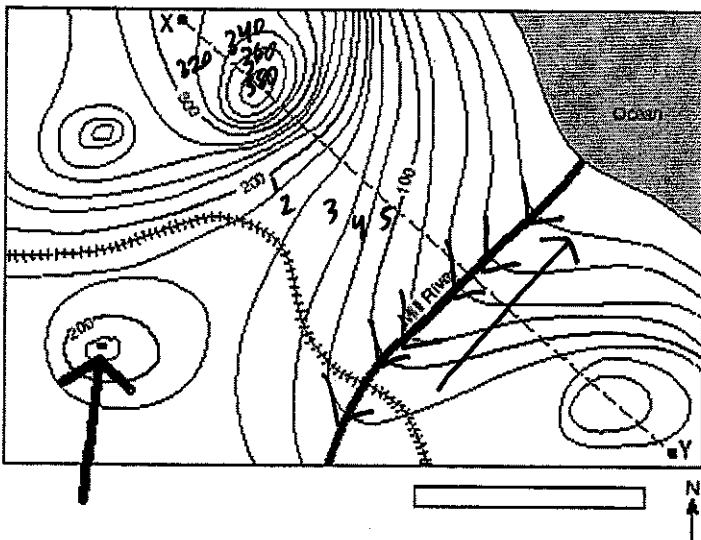
8. Label the following on the map: Latitude, Longitude, Equator, Prime Meridian



Circle the correct word in each sentence. Find the coordinates for location A on the Map above.

- (a) When determining a location you find the (latitude, longitude) first followed by the (latitude, longitude) second.
- (b) What is the location for point A? 0°, 60° W

9. Use the topographic map to answer the following questions.



- (a) What is the contour interval for this map?
 $200 - 100 = 100$
 $100 / 5 = 20$
- (b) What direction is the Mill River flowing?
 ↗ NE
- (c) What is the highest point of elevation on this map?
 380

10. Draw a line to match the term with the correct answer

- | | | |
|----------------|-----------------|-------------------|
| a. Meteorology | <u>weather</u> | Study of climates |
| b. Astronomy | <u>space</u> | Study of weather |
| c. Geology | <u>rocks</u> | Study of space |
| d. Oceanology | <u>oceans</u> | Study of rocks |
| e. Climatology | <u>climates</u> | Study of oceans |